

marie baldwin / gallery



Saturday, May 6th, 2017
5PM to 9PM

Lookatme

EDVARDA BRAANAAS

www.mariebaldwingallery.com
Instagram: @mariebaldwingallery

marie baldwin / gallery

EDVARDA BRAANAAS

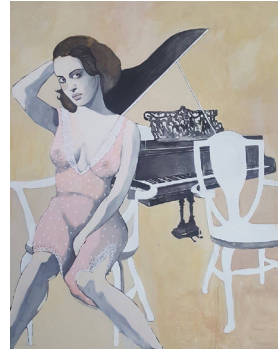
The origin and inspiration for this series of paintings on wooden panels can be traced back to a story that takes place in a grand apartment in Vienna in the late 1930s, only months before Austria will be absorbed into the third reich.

A young and rather spineless aristocrat of the Astro Hungarian empire becomes involved with a young female schoolteacher from the Ukraine. Her somber presence and dubious ethnicity makes her a stranger in this city, and she asks the young man to help her clear out and sell the estate of her late uncle who is Armenian and aunt who is Jewish.

As the schoolteacher and the young aristocrat learn more about the late couple, sorting through the items left behind, they come to discover the intensely erotic connection between the dead lovers which fueled their passion for each other through the decades.

This series of paintings is set against the backdrop of the impending devastation of Europe. The tension between the couples is rendered and explored in an explicitly sensual context. The apartment becomes a place where time both stands still and is running out. This, in turn, generates a meeting between death and eroticism, the little death. This sense of latent annihilation is perhaps the ultimate aphrodisiac, both in terms of eroticism and art.

EDVARDA BRAANAAS



You Were In It For Your Beauty Too
Tempura and acrylic on wood panel, 5.3' x 6.6' (2017)

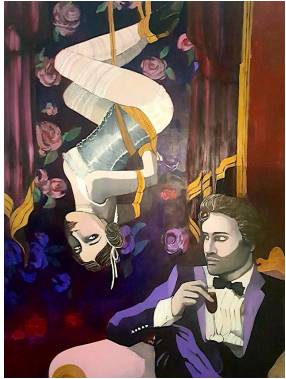


I'll Wear A Mask For You
Tempura and acrylic on wood panel, 5.3' x 6.6' (2017)



You're In Trouble (Vixen),
Tempura and acrylic on wood panel, 5.3' x 6.6' (2017)

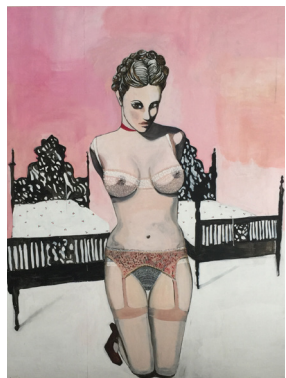
EDVARDA BRAANAAS



Give Me Back My Broken Night
Tempura and acrylic on wood panel, 5.3' x 6.6' (2017)



I Need Your Hidden Love (Indigo)
Tempura and acrylic on wood panel, 5.3' x 6.6' (2017)



Look at Me
Tempura and acrylic on wood panel, 5.3' x 6.6' (2017)





Saturday, May 6th, 2017
5PM to 9PM

Lookatme

TOMMII LIM

www.mariebaldwingallery.com
Instagram: @mariebaldwingallery

marie baldwin / gallery

TOMMII LIM

In *Lookatme*, Tommii Lim pushes the boundaries with his signature pared-down imagery that echoes significant events in the world while offering glimpses into his past. Here, we see the world from a masculine, ever present and sensitive point of view, juxtaposed next to the feminine energy and perception in Edvarda's pieces. Tommii's works are minimalist depictions of the way he interprets and catalogs his life. Through the conversations and adventures he experiences, Lim draws inspiration from the beauty in the simplicity of our existence through controlled line and space techniques. His distinct style of painting has often been described as a seduction of lines through motion as the artist uses simple conceptual elements to convey emotion.



Darkwave
Acrylic on canvas. 5' x 4' (2016)

TOMMII LIM

BLACK MAMBA PRINTS

To commemorate the release of Nike Basketball's Kobe XI and the final season of Laker legend Kobe Bryant, Tommii Lim has released the following 2 prints; Black Mamba Cocoon and Black Mamba Battle Damage.



Black Mamba Cocoon (2017)
depicts Kobe Bryant's alter ego, the Black Mamba nesting in a thorn covered Plumeria flower, symbolizing rebirth. The piece is an homage to his new journey into his post basketball career.
Limited Edition Canvas Print 5' x 5"

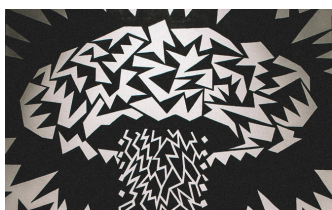


Black Mamba Battle Damage (2017)
is an abstract depiction of a scar ridden Black Mamba snake skin. This is Tommii Lim's representation of all the wars Kobe has fought and won throughout the years both on and off the court.
Limited Edition Canvas Print 5' x 5"

TOMMII LIM

GHOST EYE INSTALLATION AT THE STANDARD

A solo exhibition of works by Tommii Lim encompassing the tale of his eye accident and journey to recovery in the shape of an abstract installation.



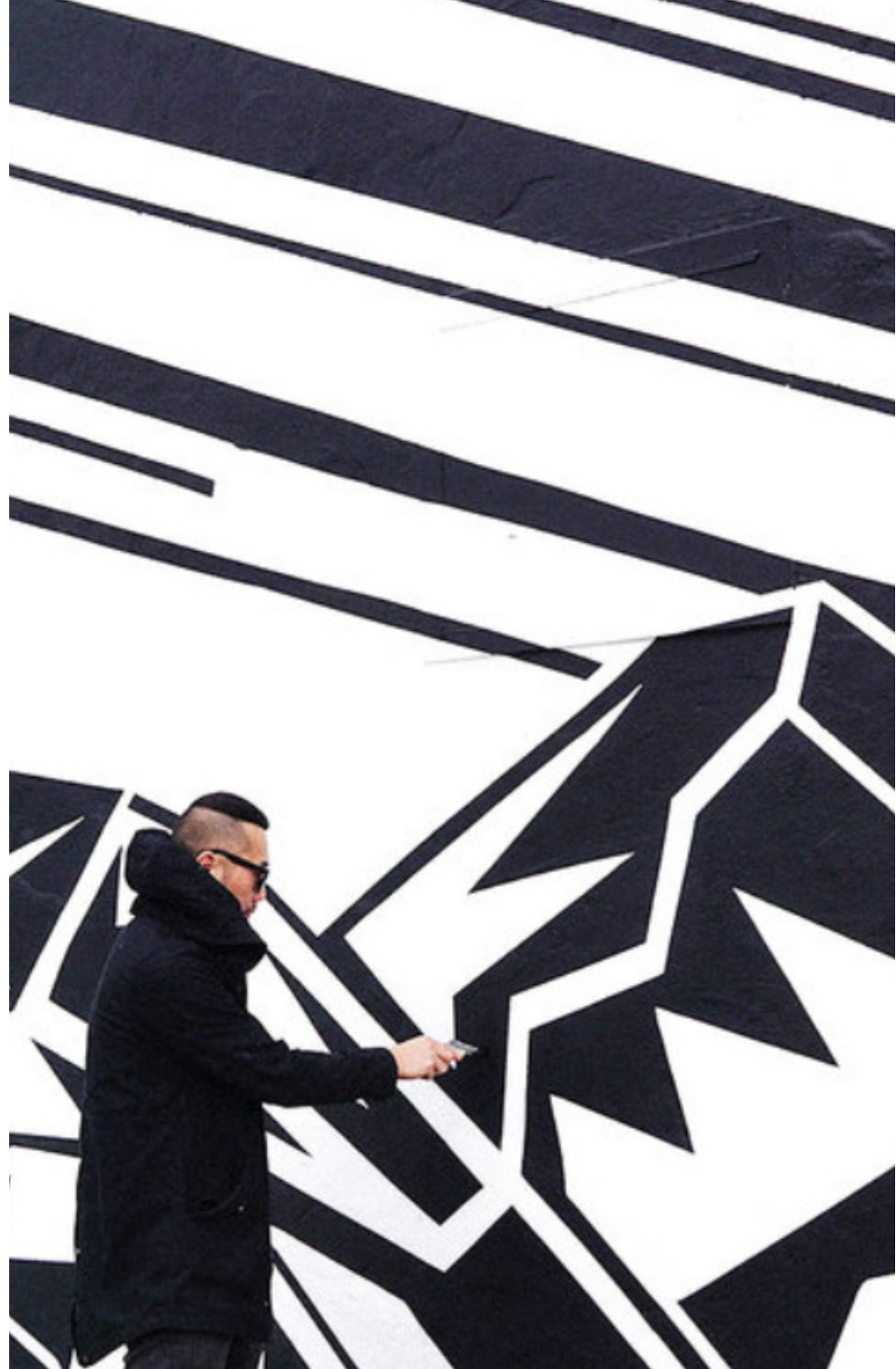
Disruption
Acrylic on wood panel. 4' x 3' (2015)



Apex
Acrylic on wood panel. 4' x 3' (2015)



Ghost Eyes
Acrylic on wood panel. 4' x 3' (2015)



marie baldwin / gallery